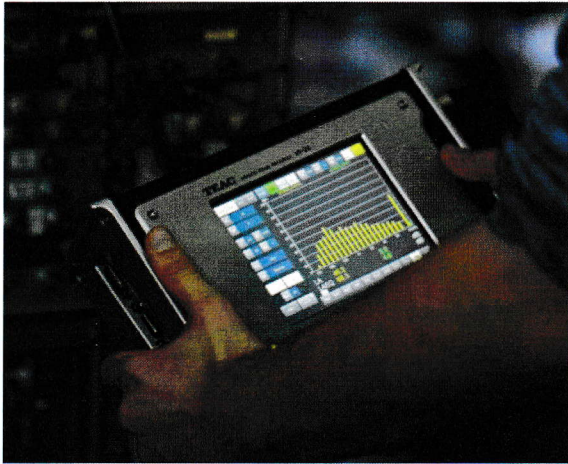


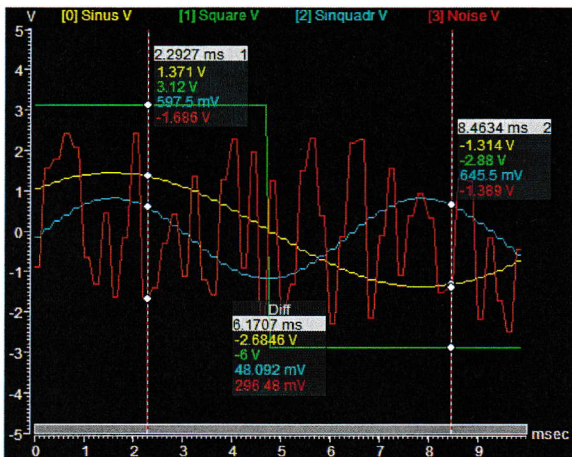
RT-View for TEAC VR24



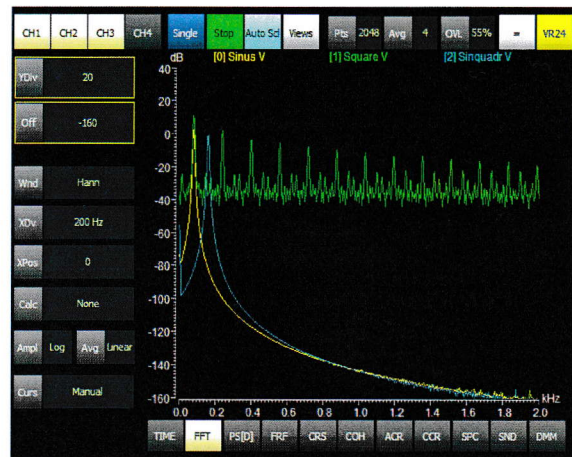
TEAC-VR24 running and displaying sound pressure measurement in RT-View

RT-View is a simple to use real time analysis tool. It allows various trigger modes and analysis of the time data with up to eight cursors and advanced zoom methods. Any calculation, display setting or number of views can be altered in real time.

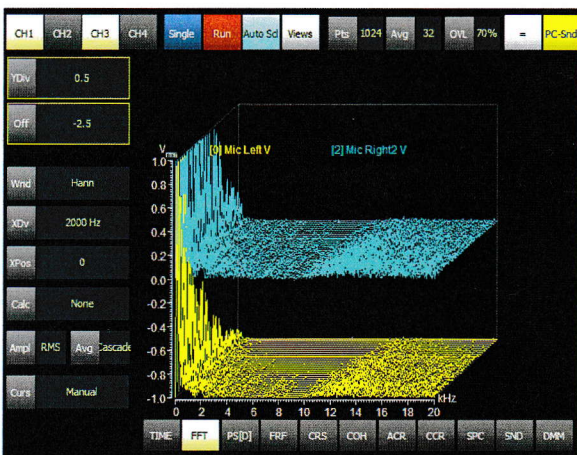
RT-View uses a simple human interface (optimized for touch panels) without nested dialogs. In nearly all cases RT-View uses one button for one function. The Auto layout lets you display up to 2 diagrams with selectable functionality.



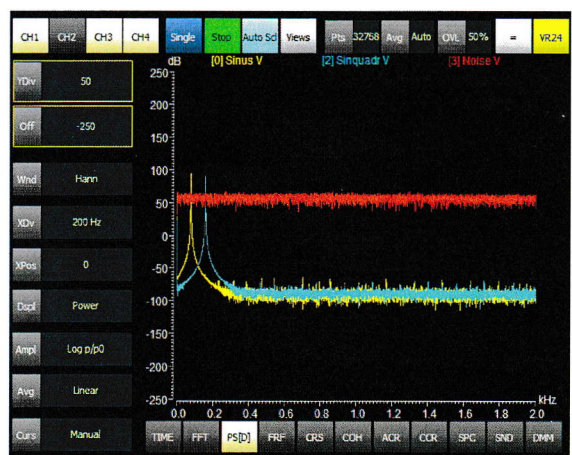
Full screen display of time signal with cursors and RMS calculation between cursors



FFT diagram with logarithmic y axis for three channels



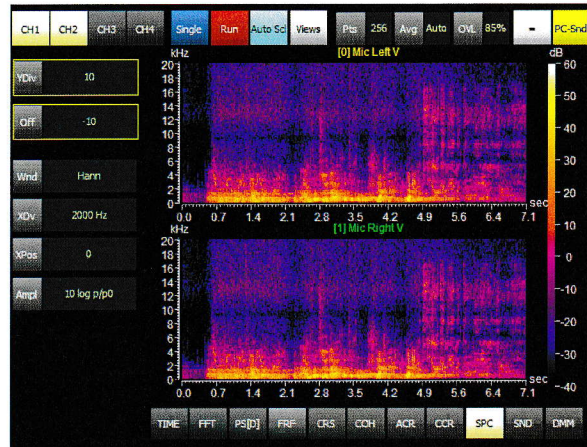
Cascade diagram with overlapping FFT's



Power spectrum with logarithmic y axis.



Cross correlation



Spectrogram for two signals



Octave analysis with A-weighting, sound pressure level and equivalent continuous sound pressure level calculation



Simultaneous Time and FFT view with multiple Cursors and four channels

RT-View Highlights

- Easy to use interface
- FFT, Power spectrum, Power spectral density, Frequency response, Cross spectrum, Coherence, Autocorrelation, Cross correlation, Spectrogram, Numerical display.
- Up to 8 cursors, with automatic peak detect in some functions. Difference or RMS values between cursors
- Octave diagram with A, C and Z weighting, Exponential time filter, L and Leq calculation, Bandwidth 1, 1/3 and 1/6 octave.
- Selectable Windows functions, FFT points, averaging and overlay for frequency functions.
- X-Y zoom with selectable boundaries.
- Time diagram with various trigger modes.