

LogMessage 5000 – Galvanic isolation at the highest level

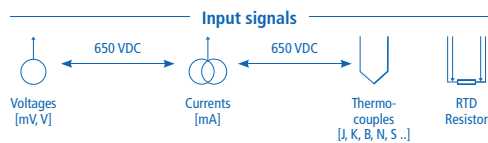
Are you looking for testing technology for measurements on high electrical potential and avoidance of ground loops? Then the right solution is the LogMessage 5000.

Sensor types can be set individually for each channel in the LogMessage 5000 data logger enabling the device to be used universally. The inputs are designed to cope with high voltages between the individual channels. Measuring non-isolated signals presents no problems. The system is intuitive to use and only a few steps are required to configure inputs and store data. The device uses tried and tested software channels to enable signal preprocessing to be performed easily and directly within the device. Limit value channels, calculation channels and many other functions can then be quickly implemented to extend the device from a pure data logger to a full signal monitoring unit.

With its internal storage capability, you get a PC-independent data logger in a compact design that can be tailored to your specific requirements.



LogMessage 5000



Applications

- Potential affected measurements
- Autonomous and secure data acquisition
- Acquisition of universal sensor signals
- PC-independent measuring and testing
- Product testing, laboratories, R & D
- GPS data logging and remote monitoring
- Temperature measurement acquisition
- Mobile data acquisition for servicing

Product features

- 16 universal analog inputs
- Sampling rates from 0.1 Hz to 60 Hz
- All analog inputs are differential
- Up to a maximum of 650 VDC isolating voltages between analog inputs
- Galvanic isolation of supply voltage and all interfaces
- No ground-loop issues
- Online calculation of measured values

Sensor connection

- Universal analog inputs (mV, mA, thermocouples, RTD)
- Clear connection diagram for simple wiring
- Screw terminals for universal sensor connection

Interfaces

- LAN, USB
- Serial interfaces RS232, RS485
- OPC UA, Modbus TCP/RTU
- CAN RAW

Data storage

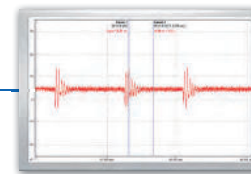
- Up to 15.5 GB internal storage
- External storage media (USB, NAS)
- Event-triggered recording with pre and post histories
- Push function

Product highlights

- High-level galvanic isolation
- Universal connection options
- Simple configuration
- Fast connection via LAN
- Reliable monitoring and alerting
- 24-bit A/D converter

ProfiSignal

USB



Offline

LAN



Online

Interfaces

- Modbus TCP/RTU
- CAN RAW
- RS232, RS485

- OPC UA
-