

FOTRIC 320M Series

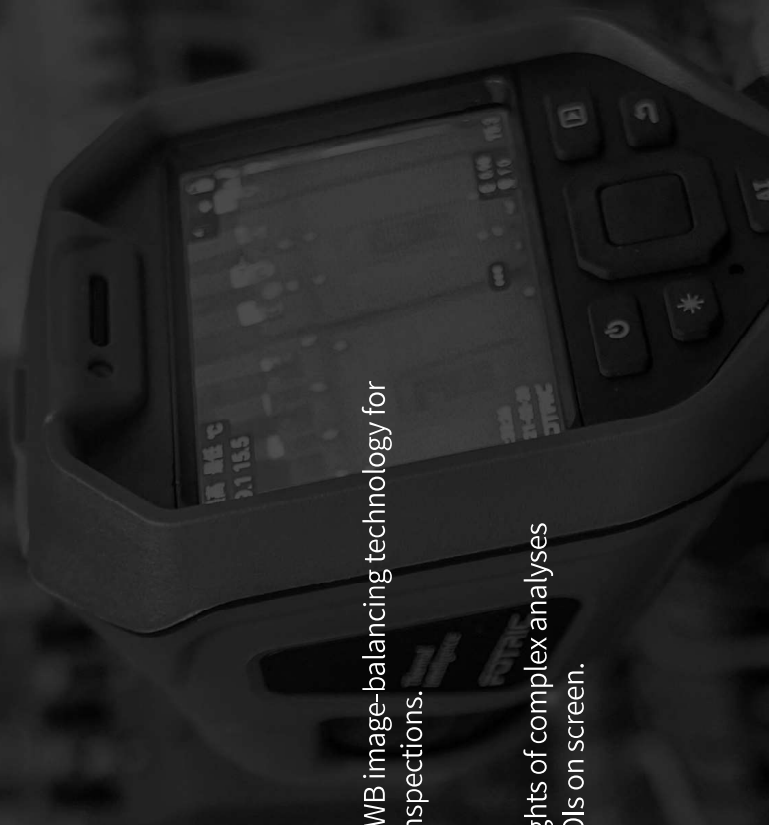
Semi-Professional Compact Thermal Imagers



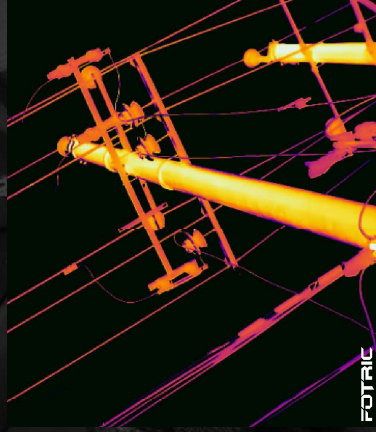
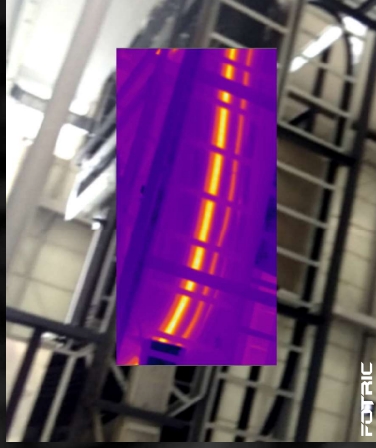
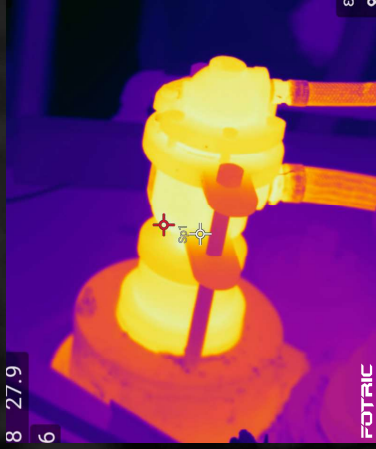
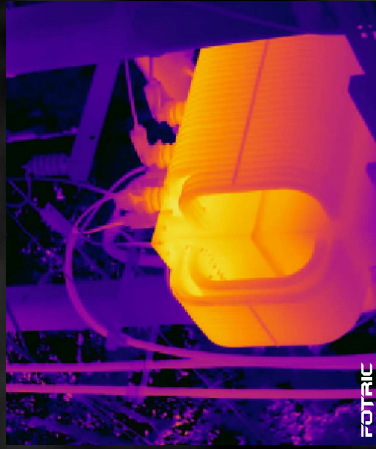
Compact
High Performance
Alternative

Flexible | Intuitive | Reliable

Decades of Thermography Expertise in your hands

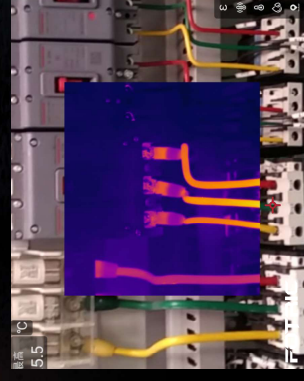


- Perform inspections in more industries with its extended, -20 to 650°C intelligent range.
- More alternatives on working distances
 - Assess electrical targets with 25° lens.
 - Work in confined spaces or fit larger targets with 49° & 46° wide-angle lens.
- Powered with TWB image-balancing technology for more intuitive inspections.
- Get deeper insights of complex analyses with up to 20 ROIs on screen.



More Intuitive Inspections

- Total focus control:
 - Achieve sharper details by easily switching from focus-free to manual focus.
 - Get as close as 0.1 m from targets to capture more details*.
- Enriched inspection results:
 - Record and listen to valuable voice annotations using a Bluetooth headset.
 - Add important written notes to videos and pictures.
- Enhanced operability:
 - Responsive 3.5" LCD touch screen & fast user interface for a smooth professional experience.
 - Light-weight, compact design that fits in any toolbox or overall pocket.

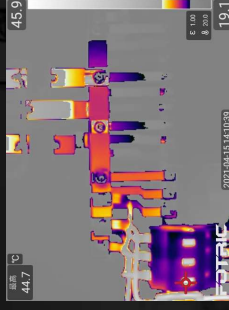
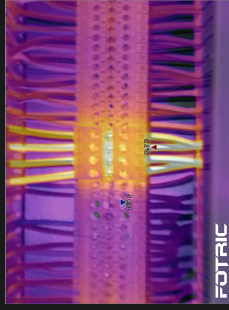


FOTRIC 320

* Available for 49° lens models.

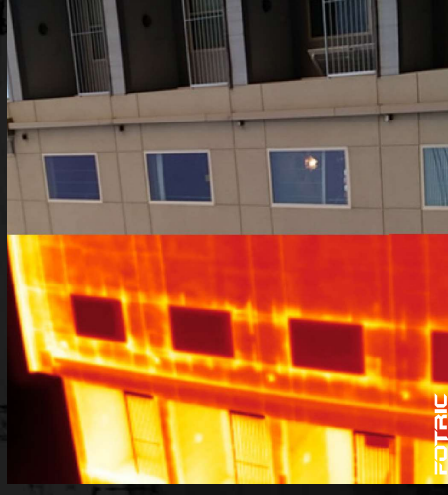
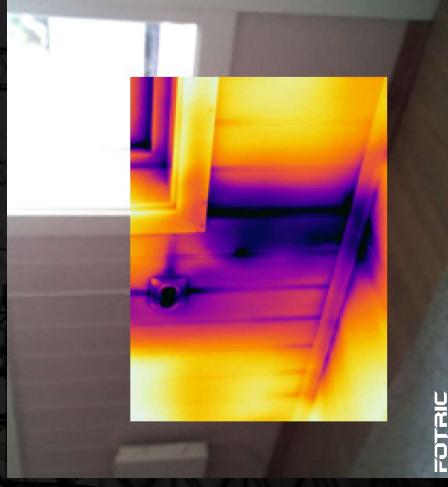
Technology-Assisted Inspections

- Spot problems faster with Touch scale mode to reveal hidden details.



- Organize images of same assets by scanning QR-Codes for Auto-Naming.

- High-Quality Reporting:
 - One-click automatic reports via FOTRIC AnalyZIR software.
 - Easy-sharing JPEG thermal pictures with embedded temperature values.
 - On-device radiometric video recording.
 - Transfer images in seconds via Wi-Fi or Memory Card (64GB).



Reliable from The Inside-out



- Top-class images by combining world-leading high sensitive sensors (40 mK*) with FOTRIC's unique image-enhancing algorithms.
- IP54 enclosure rating, 2 meters-drop tested. Highly durable against common field environment.

IP54

2m

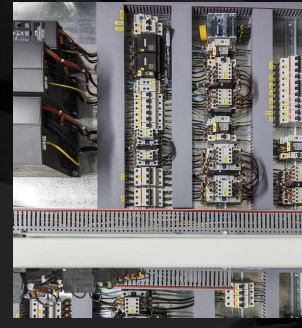
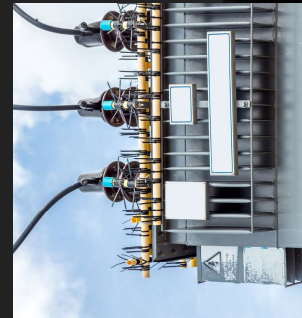
- Up to One day shift of combined battery life makes it the perfect companion for long shifts.



- Lifetime Free upgrades of camera software based on global users' insights.



* Available for specified models



Specifications

Core parameters	FOTRIC 326M	FOTRIC 325M	FOTRIC 323M	FOTRIC 322M
Thermal Resolution	384*288	320*240	264*198	160*120
Super Resolution (SR)	768*576	640*480	528*396	320*240
Thermal Sensitivity (NETD)	40mk(0.04°C)	40mk(0.04°C)	40mk(0.04°C)	60mk(0.06°C)
Lens Options (Not interchangeable)	49°x 36.8°	25°x 19°	49°x 36.8°	25°x 19°
IFOV (spatial resolution)	2.27 mrad	1.14 mrad	1.37 mrad	3.40 mrad
Focal length	17.5	17.5	17.5	17.5
Minimum Focus Distance	0.15m	0.15m	0.15m	0.15m
Focus Mode	Manual focus, and 0.5 meters focus free (available for 49° and 46.5° lens)			
Frame Rate	30Hz			
AI programmable key	Support			
Wi-Fi & Bluetooth	Support			
Wi-Fi FTP Transfer	Transfer imaging data to computer, by Wi-Fi FTP protocol			
Geographic Location	Support, GPS			
Thermal and visible light Image fusion	Support, transparency 0% ~100%			
Picture in Picture	Support, resizable and adjustable			
TWB Non-linear thermal color display	Support			
Build-in digital camera	8 MP industrial camera			
LED flash lamp	Support			
Temperature Analysis				
Temperature Range	-20 °C ~ 120°C, 0 °C ~ 650°C			
Intelligent Range Auto-fit	Support			
Measurement Tools	Spot; 10; Line; 2; Rectangle; Circle; 3			
Measurement Accuracy	±2 °C or 2%, whichever is greater (at 25 °C ambient temperature)			
Emissivity	Support			
Ambient Temp	Support			
Reflected Temp	Support			
Relative Humidity	Support			
Measurement Distance	Support			
IR Window Compensation	Support			
Temperature Rise & Difference	Support			
ROI Sound Alarm	Support, via Speaker or Bluetooth headset			
ROI Partial Emissivity	Support			
Image Display				
Display Screen	3.5 inch Touch Screen			
Image Mode	Thermal, Visible light, Picture in Picture & Image Fusion			
Palettes	8, Grey, Iron, Rainbow, Grey-red, Rain, GlowBow, Medical, Prism			
Inverted Palettes	Support			
Isotherm/Color Alarms	Support (Above, Below, and in-between)			
Auto Scale	Support			
Manual Scale	Support			
Touch Scale	Support			
Minimum Temperature Span	Auto: 3°C, Manual: 2°C			

Storage & Analysis	FOTRIC 326M	FOTRIC 325M	FOTRIC 323M	FOTRIC 322M
Storage Card		TF card, 64GB		
Capture Mode		Single frame capture and Time-lapse		
Video Recording		Radiometric thermal video (IIRS), and MP4 video recording		
File Format		Radiometric thermal photo (JPEG), visible light photo, radiometric thermal video (IIRS), and MP4 video		
On screen Analysis		Support, record up to 120 seconds via Mic or Bluetooth headset		
Voice Annotation		Support		
Text Annotation		Support		
Tags		Support, Manual input and QR-code scan		
Favorite		Support		
PC analysis and Report Software		Fotric AnalyzIR software, FREE		
Remote Display & Analysis		Support		
Power System				
Battery		3.6V, 5000mAh LI-battery		
Battery operation time		≥4 hours		≥5 hours
Battery charging time		3.5 hours to full-charge by battery dock, 3 hours to full-charge by connecting to camera.		
Charging methods		Support battery dock adaptor or Type-C interface on camera.		
Power supply		Support Type-C interface charging method, from power adaptor or computer.		
Auto screen-off		Support		
General Specifications				
Spectral range		7-14µm		
IR Detector type		Polysilicon uncooled FPA infrared detector		
Detector Pitch		17µm		
Digital Zoom		1-8 times, continuous		
Wi-Fi Connection		Support 2.4GHz & 5GHz channel, Support 802.11a/b/g/n/ac		
Bluetooth Connection		BT4.2 LE, Support connect to Bluetooth headset		
USB Interface		USB Type-C type; USB 3.0 / 2.0 compliant, Support USB OTG		
HDMI Interface		Micro HDMI type; HDMI 1.4 compliant; Support 1080P imaging video streaming in 60Hz.		
Storage Card Interface		TF Card, Support Hot-plug.		
Laser pointer		Level2; wavelength: 635nm; Power: <1mW		
Operation temperature		-20°C to 50°C		
Storage temperature		-40°C to 70°C, without battery		
Humidity		<95%RH		
Safety		SELV relay (GB 4943.1/IEC 60950-1)		
Electromagnetic Compatibility		GB/T 17626.2/IEC 61000-4-2		
Vibration		2g (GB/T 2423.10/IEC 60068-2-6)		
Shock		25g (GB/T 2423.5/IEC 60068-2-27)		
Collision		10g (GB/T 2423.6/IEC 60068-2-29) with packing		
Drop		Designed for 2 meters drop test. (GB/T 2423.8/IEC 60068-2-32)		
Dimension		243mm*95mm*142mm		
Weight (include battery)		730g		
Enclosure rating		IP54		
Tripod interface		UNC 1/4 -20 threaded hole for tripod		
Warranty		2 years warranty on camera, 10 years for IR detector.		
Recommended calibration cycle		2 years		
Supported languages		English, Spanish, Korean, Traditional Chinese		
RoHS compliant		Yes		
Box Contents		FOTRIC 320 handheld thermal camera, Documentations (certificate of inspection, certificate of calibration, warranty card, packing list), Quick-start user manual, USB-Type C cable, Micro-HDMI cable, TF card, TF card reader, Power adaptor, Battery charger dock, 2 pieces of batteries.		

Innovation Excellence Integrity

Equipment described herein may require EU, US and UNSC authorization for export purposes.

Imagery for illustration purposes only.

Specifications are subject to change without notice.

FOTRIC INC. All Rights reserved.

Contact FOTRIC

✉ info@fotric.com

🏠 www.fotric.com

Follow us in



FOTRIC
— Beyond the limit of Sight —